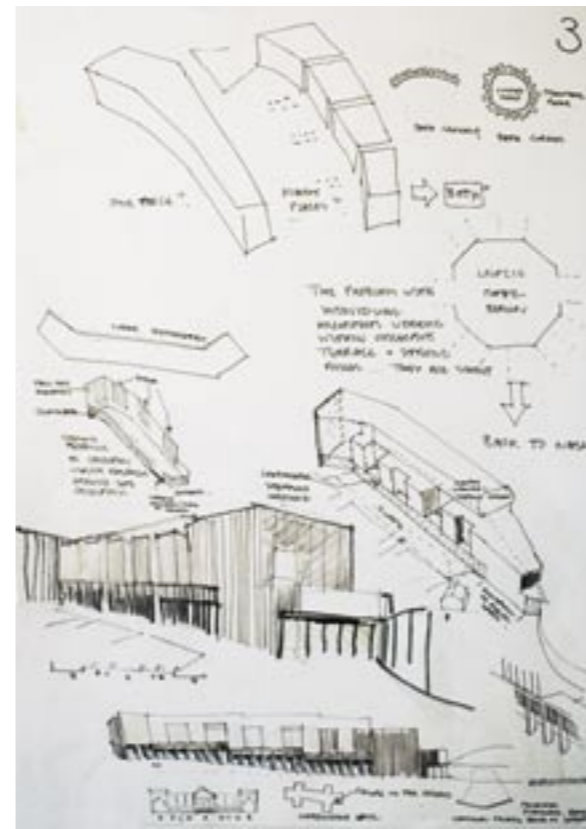
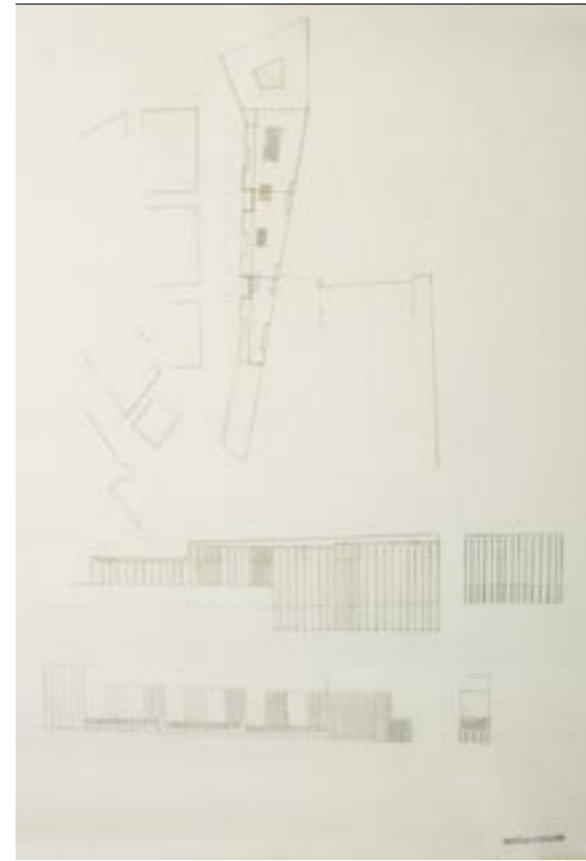
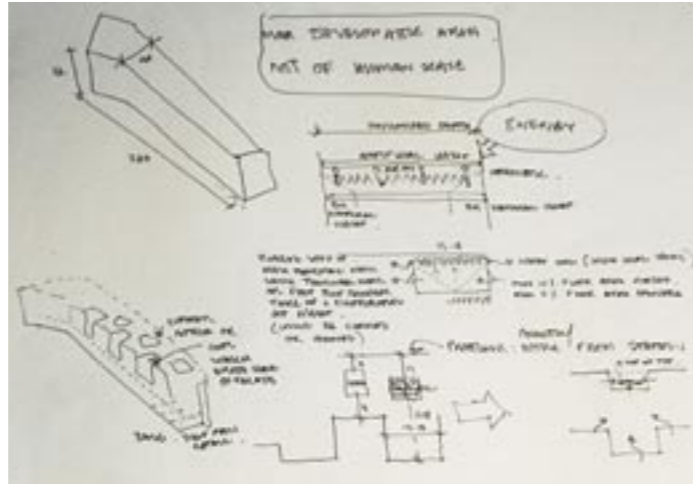


DRDH ARCHITECTS

The scale of the proposed building defines it as a city figure, resonating with the scales of Victorian train sheds and the British Library. The project exhibits a face to the city but expresses length through elemental repetition. Rhythms and scales are introduced through a series of bays, which erode the deep floorplate and allow in natural light and ventilation. Their facades are expressed through finely proportioned aluminium framing. But due to the scale of adjacent spaces, the primary visual experience of the building is in the oblique, at which point it becomes folded and fabric-like. The inflected plan of the street emphasises this.

Our project questions the desire for heterogeneity. We seek to express an ambivalence in the relationship between the individual element and a holistic singular expression. The form of the facade refers to H P Berlage's Holland House, while the framing of our bays expresses the idea that extreme length becomes atmospheric – shifting from black bronze to a champagne colour. *David Howarth, Richard Marks, Daniel Rosbottom, Angela Tsang*



'We questioned the desire for heterogeneity, and sought to express an ambivalence in the relationship between the individual element and a holistic singular expression.'

